

A6174

Leader in Biomolecular Solutions for Life Science



NAP1L1 Rabbit mAb

Catalog No.: A6174 **Recombinant**

Basic Information

Observed MW

52kDa

Calculated MW

45kDa

Category

SMab Recombinant Monoclonal Antibody

Applications

WB,IF/ICC,ELISA

Cross-Reactivity

Human,Mouse,Rat

CloneNo number

ARC1888

Background

This gene encodes a member of the nucleosome assembly protein (NAP) family. This protein participates in DNA replication and may play a role in modulating chromatin formation and contribute to the regulation of cell proliferation. Alternative splicing results in multiple transcript variants encoding different isoforms; however, not all have been fully described.

Recommended Dilutions

WB	1:500 - 1:1000
IF/ICC	1:50 - 1:200

Immunogen Information

Gene ID

4673

Swiss Prot

P55209

Immunogen

A synthetic peptide corresponding to a sequence within amino acids 1-100 of human NAP1L1 (P55209).

Synonyms

NRP; NAP1; NAP1L; NAP1L1

Contact



www.abclonal.com

Product Information

Source

Rabbit

Isotype

IgG

Purification

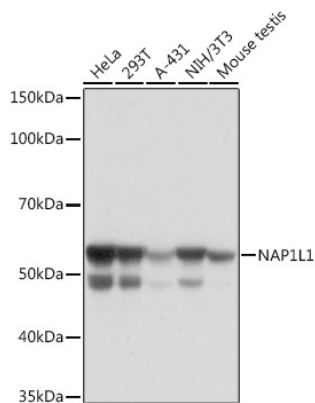
Affinity purification

Storage

Store at -20°C. Avoid freeze / thaw cycles.

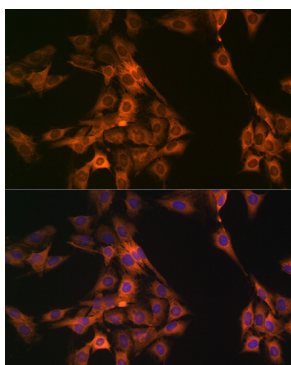
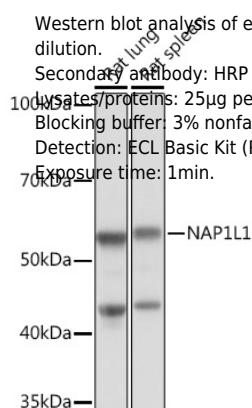
Buffer: PBS with 0.02% sodium azide,0.05% BSA,50% glycerol,pH7.3.

Validation Data

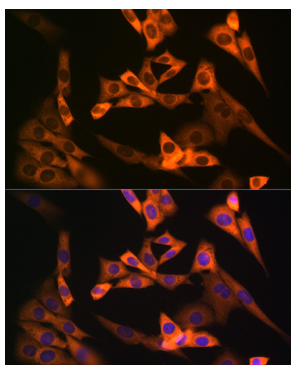


Western blot analysis of extracts of various cell lines, using NAP1L1 Rabbit mAb (A6174) at 1:1000 dilution.
 Secondary antibody: HRP Goat Anti-Rabbit IgG (H+L) (AS014) at 1:10000 dilution.
 Lysates/proteins: 25µg per lane.
 Blocking buffer: 3% nonfat dry milk in TBST.
 Detection: ECL Basic Kit (RM00020).
 Exposure time: 10s.

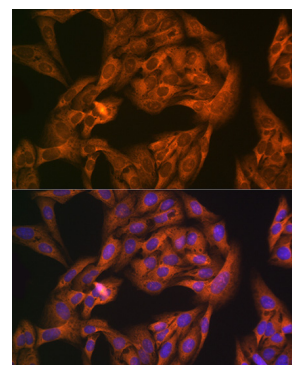
Western blot analysis of extracts of various cell lines, using NAP1L1 Rabbit mAb (A6174) at 1:1000 dilution.
 Secondary antibody: HRP Goat Anti-Rabbit IgG (H+L) (AS014) at 1:10000 dilution.
 Lysates/proteins: 25µg per lane.
 Blocking buffer: 3% nonfat dry milk in TBST.
 Detection: ECL Basic Kit (RM00020).
 Exposure time: 1min.



Immunofluorescence analysis of C6 cells using NAP1L1 Rabbit mAb (A6174) at dilution of 1:100 (40x lens). Blue: DAPI for nuclear staining.



Immunofluorescence analysis of NIH-3T3 cells using NAP1L1 Rabbit mAb (A6174) at dilution of 1:100 (40x lens). Blue: DAPI for nuclear staining.



Immunofluorescence analysis of U-2 OS cells using NAP1L1 Rabbit mAb (A6174) at dilution of 1:100 (40x lens). Blue: DAPI for nuclear staining.