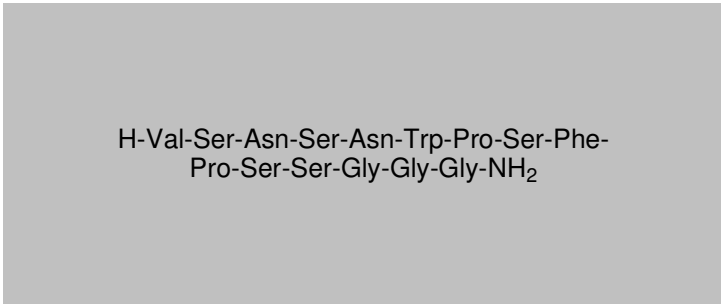


Certificate Of Analysis
Quality Control Testing and Research ApplicationCOA Preparation Date: 29/12/2014
COA Revision Date: 29/12/2017**Product:** Caloxin 2A1
Cat. No.: BP0357
Batch No.: 0357BP/01
Chemical Name:**1. PHYSICAL AND CHEMICAL PROPERTIES****Batch Molecular Formula:** C₆₄H₉₁N₁₉O₂₂
Batch Molecular Weight: 1478.52
CAS No.:
Physical Appearance: White crystalline solid
Melting Point:
Solubility: Soluble to 1 mg/ml in water
Storage: Desiccate at -20° C
Batch Molecular Structure:

H-Val-Ser-Asn-Ser-Asn-Trp-Pro-Ser-Phe-
Pro-Ser-Ser-Gly-Gly-Gly-NH₂

Product Description: Plasma membrane Ca²⁺ ATPase (PMCA) inhibitor. It has been reported to inhibit PMCA activity by interacting with the second extracellular loop on the pump.**References:** 1. Chaudhary et al. (2001) AJP Cell Phys 280:C1027

- CAUTION - Not fully tested. For Research use only. Not for human use. –

Certificate Of Analysis
Quality Control Testing and Research Application

COA Preparation Date: 29/12/2014
 COA Revision Date: 29/12/2017

BP0357 Caloxin 2A1

2. ANALYTICAL DATA

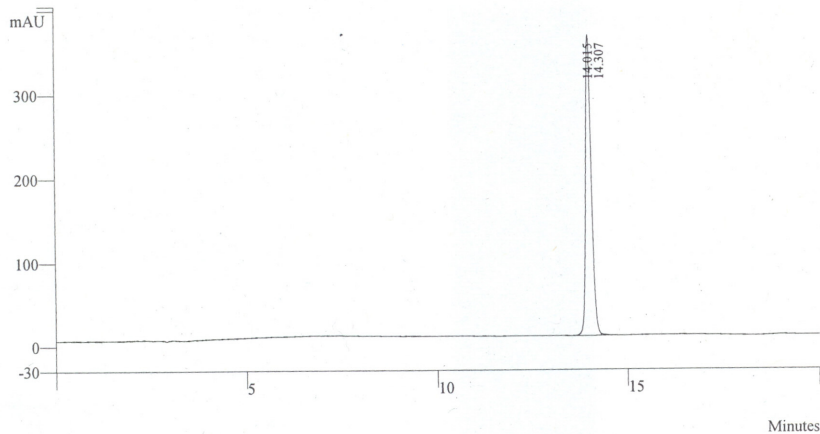
HPLC: corresponds to the reference

MS: corresponds to the reference

Tests: Counter Ion: Trifluoroacetate; Peptide Content: 88%; HPLC Assay: 99.5% (complies).

| | | | |
|-------------------|----------------------------------------|---------------------|---------------------|
| Data File: | c:\star\data\22-7-20\v08072t1-teap.run | Calc Date: | 08/14/2007 12:36:39 |
| Channel: | 2 = UV RESULTS | Times Calculated: | 3 |
| Sample ID: | V08072T1-TEAP | Calculation Method: | v08072t1-teap-2.mth |
| Instrument (Inj): | Right Side System | Run Mode: | Analysis |
| Injection Date: | 08/14/2007 12:14:19 | Peak Measurement: | Peak Area |
| Injection Method: | c:\star\method\right side method.mth | Calculation Type: | Percent |
| Run Time (min): | 20.000 | | |

Wavelength: 215 nm; Flow rate: 1.2 ml/min; Buffer A: 1% TEAP in Water; Buffer B: 100% Acetonitrile; Temp.:
 Column: Discovery C18, 4.6 mm x 250 mm, 5 micron; Gradient (Linear): 10%-30% buffer B in 20 min.; Inj. Vol.: 20 ul
 Analyst: Shilpa Patel,



| Peak No | Result (%) | Ret Time (min) | Peak Area (counts) | Peak Height (counts) |
|---------|--------------|----------------|--------------------|----------------------|
| 1 | 99.5 | 14.015 | 3735000 | 304341 |
| 2 | 0.5 | 14.307 | 19776 | 2174 |
| | 100.0 | | 3754776 | 306515 |

- CAUTION - Not fully tested. For Research use only. Not for human use. -