

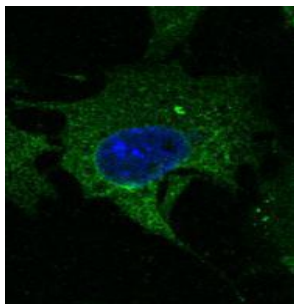
## Anti-CD63 antibody

Cat# NB-22-32549-300ug

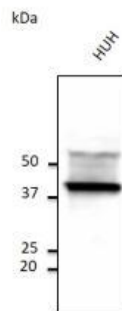
Cat# NB-22-32549-1,5mg

Cat# NB-22-32549-20

Cat# NB-22-32549-50



Immunofluorescence was carried out on 4% PFA fixed Hepa1-6 cells, using Anti-CD63 polyclonal antibody at a 1:50 dilution.



Western Blot was carried out using Anti-CD63 polyclonal antibody at a 1:2,500 dilution, with lysates of 50 µg per lane and secondary antibody rabbit anti-goat IgG (HRP) at 1:10,000 dilution.

## Description:

Goat polyclonal anti-CD63 antibody is suitable for use in Western Blot and Immunofluorescence.

## Product information:

<b>Product Type</b>	Primary antibodies
<b>Applications</b>	WB, IF
<b>Host/Source</b>	Goat
<b>Reactivity</b>	Human, Mouse, Rat, Bovine, Canine, Chicken, Donkey, Cat, Goat, Guinea Pig, Hamster, Horse, Porcine, Rabbit, Sheep, Simian, Other

<b>Clonality</b>	Polyclonal
<b>Concentration</b>	3 mg/mL
<b>Conjugation</b>	Unconjugated
<b>Purification</b>	This antibody is epitope-affinity purified from goat antiserum.
<b>Formulation</b>	PBS, 20% glycerol and 0.05% sodium azide.
<b>Isotype</b>	IgG
<b>Storage</b>	For continuous use, store at 2-8 °C for one-two days. For extended storage, store in -20 °C freezer. Working dilution samples should
<b>Instruction</b>	be discarded if not used within 12 hours.

## Target:

---

<b>Gene ID</b>	967
<b>Gene Symbol</b>	CD63
<b>Uniprot ID</b>	CD63_HUMAN
<b>Immunogen</b>	Purified recombinant peptide derived from within residues 120 aa to 175 aa of human CD63 produced in E. coli.
<b>Specificity</b>	Reacts with CD63, a 40-60 kDa glycoprotein, detected by western blot in the following human (HeLa, HUH, Jurkat) , mouse (AtT-20,Hepa, 3T3, RAW264.7) , canine (MDCK) and monkey (COS-7) whole cell lysates.