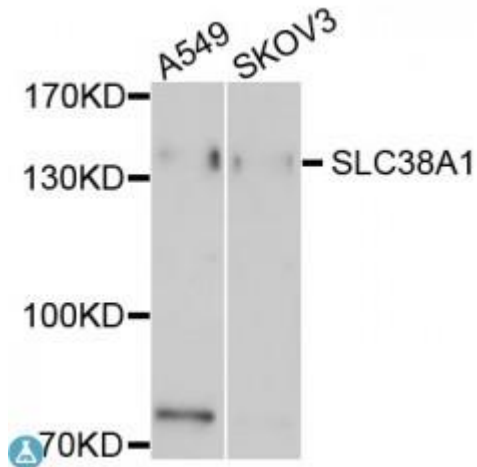


Anti-EMILIN1 Antibody

Cat #NB-22-18761 (100 µl)



Description

This gene encodes an extracellular matrix glycoprotein that is characterized by an N-terminal microfibril interface domain, a coiled-coiled alpha-helical domain, a collagenous domain and a C-terminal globular C1q domain. The encoded protein associates with elastic fibers at the interface between elastin and microfibrils and may play a role in the development of elastic tissues including large blood vessels, dermis, heart and lung.

Product informations

Model	NB-22-18761
Host	Rabbit
Reactivity	Human
Applications	WB
Immunogen	Recombinant fusion protein containing a sequence corresponding to amino acids 817-1016 of human EMILIN1 (NP_008977.1).
Gene ID	11117
Gene Symbol	EMILIN1
Dilution range	WB 1:200 - 1:2000
Tissue Specificity	Distributed in tissues where resilience and elastic recoil are prominent, Highest levels in the adult small intestine, aorta, lung, uterus, and appendix and in the fetal spleen, kidney, lung, and heart

Purification	Affinity purification
Note	For Research Use Only (RUO).
Protein Name	EMILIN-1 Elastin microfibril interface-located protein 1 Elastin microfibril interfacier 1
Molecular Weight	106.695 kDa
Clonality	Polyclonal
Conjugation	Unconjugated
Isotype	IgG
Formulation	PBS with 0.02% sodium azide, 50% glycerol, pH7.3.
Storage Instruction	Store at -20C. Avoid freeze / thaw cycles.
Database Links	HGNC:19880 OMIM:130660 Reactome:R-HSA-2129379
Alternative Names	EMILIN-1 Elastin microfibril interface-located protein 1 Elastin microfibril interfacier 1
Function	May be responsible for anchoring smooth muscle cells to elastic fibers, and may be involved not only in the formation of the elastic fiber, but also in the processes that regulate vessel assembly, Has cell adhesive capacity
Cellular Localization	Secreted, extracellular space, extracellular matrix