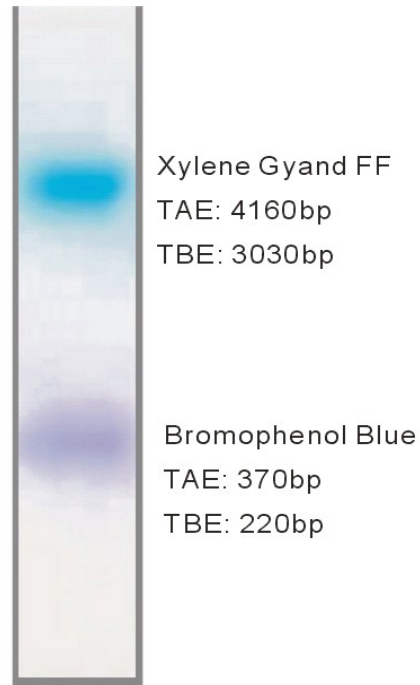


## 6x DNA Loading Dye

**Ref : NB-03-0169 5 x 1ml**

### Contents

- 10 mM Tris-HCL (pH 7.6)
- 0.03 % Bromophenol Blue
- 0.03% Xylene Cyanol
- 60 % Glycerol
- 60 mM EDTA



Electrophoresis of tracking dyes  
in 6x Gel Loading Dye

### Description

The Neobiotech 6x DNA Loading Dye is a pre-mixed loading buffer with two tracking dye for agarose and non-denaturing polyacrylamide gel electrophoresis. EDTA is included to chelate magnesium (up to 10 mM) in enzymatic reactions, thereby stopping the reaction. Bromophenol blue and xylene cyanol are the standard tracking dye for electrophoresis.

### Applications

Preparation of DNA ladders, markers and samples for loading on agarose or polyacrylamide gels.

### Features

Two-color tracking of DNA migration during electrophoresis.

No DNA masking during gel exposure to UV light.

EDTA binds divalent metal ions and inhibits metal dependent nucleases.

### Storage

1 year at room temperature, for long-time preservation, please storage at -20°C .

## **Quality Assurance Statement**

Gel Loading Dye(6X) is assayed for contaminating endonuclease, exonuclease and RNase Activity