

A19135

Leader in Biomolecular Solutions for Life Science



## PD-L1/CD274 Rabbit mAb

Catalog No.: A19135

Recombinant

2 Publications

### Basic Information

#### Observed MW

40-50kDa

#### Calculated MW

33kDa

#### Category

SMab Recombinant Monoclonal  
Antibody

#### Applications

WB,IHC-P,ELISA

#### Cross-Reactivity

Human

#### CloneNo number

ARC2478

### Recommended Dilutions

WB 1:500 - 1:1000

IHC-P 1:100 - 1:500

### Background

This gene encodes an immune inhibitory receptor ligand that is expressed by hematopoietic and non-hematopoietic cells, such as T cells and B cells and various types of tumor cells. The encoded protein is a type I transmembrane protein that has immunoglobulin V-like and C-like domains. Interaction of this ligand with its receptor inhibits T-cell activation and cytokine production. During infection or inflammation of normal tissue, this interaction is important for preventing autoimmunity by maintaining homeostasis of the immune response. In tumor microenvironments, this interaction provides an immune escape for tumor cells through cytotoxic T-cell inactivation. Expression of this gene in tumor cells is considered to be prognostic in many types of human malignancies, including colon cancer and renal cell carcinoma. Alternative splicing results in multiple transcript variants.

### Immunogen Information

#### Gene ID

29126

#### Swiss Prot

Q9NZQ7

#### Immunogen

Recombinant fusion protein containing a sequence corresponding to amino acids 1-290 of human PD-L1/CD274 (Q9NZQ7).

#### Synonyms

B7-H; B7H1; PDL1; PD-L1; hPD-L1; PDCD1L1; PDCD1LG1; PD-L1/CD274

### Contact



[www.abclonal.com](http://www.abclonal.com)

### Product Information

#### Source

Rabbit

#### Isotype

IgG

#### Purification

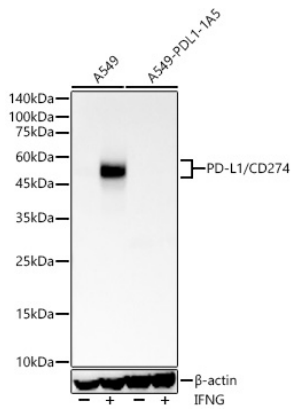
Affinity purification

#### Storage

Store at -20°C. Avoid freeze / thaw cycles.

Buffer: PBS with 0.05% proclin300,0.05% BSA,50% glycerol,pH7.3.

## Validation Data



Western blot analysis of lysates from wild type (WT) and PD-L1/CD274 knockout (KO) A549 cells using PD-L1/CD274 Rabbit mAb (A19135) at 1:1000 dilution. wild type (WT) and PD-L1/CD274 knockout (KO) A549 cells were treated by IFNG (100 ng/mL) at 37°C for 48 hours.

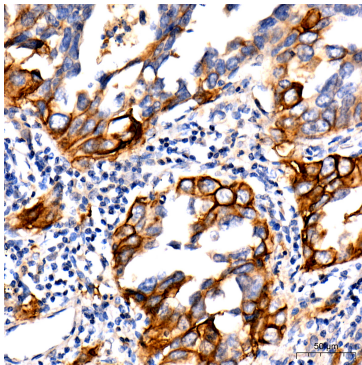
Secondary antibody: HRP Goat Anti-Rabbit IgG (H+L) (AS014) at 1:10000 dilution.

Lysates/proteins: 25ug per lane.

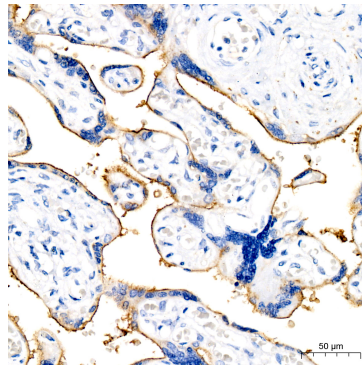
Blocking buffer: 3% nonfat dry milk in TBST.

Detection: ECL Basic Kit (RM00020).

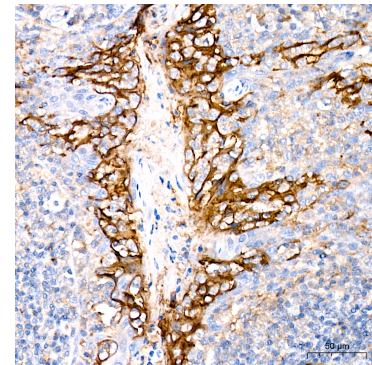
Exposure time: 60s.



Immunohistochemistry analysis of paraffin-embedded Human lung adenocarcinoma using PD-L1/CD274 Rabbit mAb (A19135) at dilution of 1:500 (40x lens). High pressure antigen retrieval performed with 0.01M Citrate Bufferr (pH 6.0) prior to IHC staining.



Immunohistochemistry analysis of paraffin-embedded Human placenta using PD-L1/CD274 Rabbit mAb (A19135) at dilution of 1:500 (40x lens). High pressure antigen retrieval performed with 0.01M Citrate Bufferr (pH 6.0) prior to IHC staining.



Immunohistochemistry analysis of paraffin-embedded Human tonsil using PD-L1/CD274 Rabbit mAb (A19135) at dilution of 1:500 (40x lens). High pressure antigen retrieval performed with 0.01M Citrate Bufferr (pH 6.0) prior to IHC staining.