

NeoPRO Western ECL Substrate

#Cat:NB-78-00001	Size: 2x125mLkit
#Cat:NB-78-00002	Size: 2x125mLkit
#Cat:NB-78-00003	Size: 2x125mLkit
#Cat:NB-78-00004	Size: 2x50mLkit
#Cat:NB-78-00005	Size: 2x50mLkit

Two-Solution ECL Substrates for Western Blotting

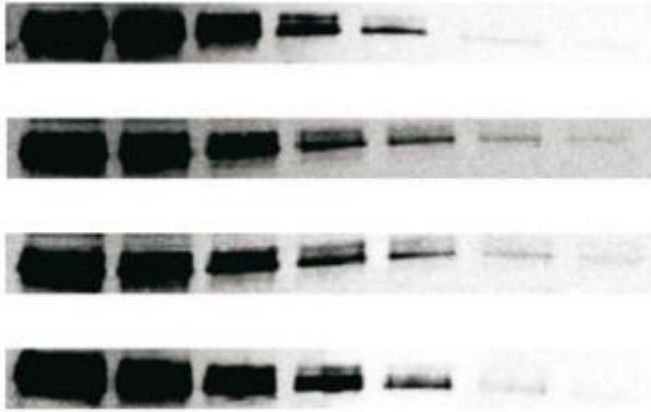
Different levels of sensitivity available for your Western blotting

NeoPro is our product line of chemiluminescent substrates for Western blotting. Neo Biotech offers a family of products with different sensitivity, allowing from picogram to femtogram detection range. Our proprietary technology enables fine tuning of signal intensity in order to obtain the assay sensitivity and signal duration best suited to meet each experimental need.

Product	Competitors	When to use
NeoPRO Nano Western ECL Substrate Cod.NB-78-00001	AMERSHAM ECL START - CYTIVA AMERSHAM ECL - CYTIVA PIERCE ECL-THERMO SCIENTIFIC IMMOBILON CLASSICO - MILLIPORE	Mid picogram detection
NeoPRO Pico Western ECL Substrate Cod.NB-78-00002	PIERCE ECL PLUS -THERMO SCIENTIFIC IMMOBILON CLASSICO - MILLIPORE WESTERN LIGHTNING PLUS - REVVITY WESTERNBRIGHT ECL- ADVANSTA	Low picogram detection
NeoPRO Pico PLUS Western ECL Substrate Cod.NB-78-00003	AMERSHAM ECL PRIME - CYTIVA CLARITY- BIO-RAD SUPERSIGNAL WEST DURA –THERMO SCIENTIFIC SUPERSIGNAL WEST PICO PLUS – THERMO SCIENTIFIC IMMOBILON CRESCENDO – MILLIPORE WESTERNBRIGHT QUANTUM- ADVANSTA	Mid femtogram detection
NeoPRO Femto Western ECL Substrate Cod.NB-78-00004	SUPERSIGNAL WEST DURA –THERMO SCIENTIFIC IMMOBILON FORTE - MILLIPORE IMMOBILON - MILLIPORE WESTERN LIGHTNING PRO - REVVITY	Mid to low femtogram detection
NeoPRO Femto PLUS Western ECL Substrate Cod.NB-78-00005	CLARITY MAX - BIO-RAD AMERSHAM ECL SELECT - CYTIVA WESTERN LIGHTNING ULTRA- REVVITY WESTERN BLOT ULTRA SENSITIVE HRP - TAKARA CHEMI-LUMI ONE ULTRA – NACALAI SUPERSIGNAL WEST FEMTO–THERMO SCIENTIFIC WESTERNBRIGHT SIRIUS- ADVANSTA	Low femtogram detection
NeoPRO Atto Western ECL Substrate Cod.NB-78-00006	IMMOBILON ULTRA PLUS - MILLIPORE	Attogram detection

NeoPRO Nano Western ECL Substrate

Our entry level substrate for mid picogram detection level.



NeoPRO Nano Western ECL Substrate

Pierce ECL-Thermo Scientific

Amersham ECL- CYTIVA

Amersham ECL Start- CYTIVA

Western blotting detection of ERK-1/2 on HeLa cell lysate with NeoPRO Nano Western ECL Substrate and its competitors.

Sample: Two-fold dilution of HeLa cell lysate from 5 μ g to 0.078 μ g

Primary antibody: Rabbit anti ERK-1/2 1:1000.

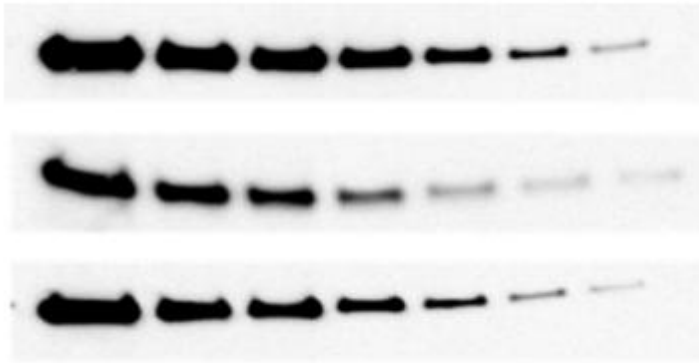
Secondary antibody: Donkey anti-rabbit IgG HRP 1:5000.

Imager: NeoPro R . Exposure time: 90 seconds

NeoPRO Pico Western ECL Substrate

Substrate for very abundant target and sample.

Stable light output for low picogram detection level.



NeoPRO Pico Western ECL Substrate

Pierce ECL-Thermo Scientific

Immobilon CLASSICO-Millipore

Western blotting detection of HDAC-1 on HeLa cell lysate with NeoPRO Pico Western ECL Substrate and its competitors.

Sample: Two-fold dilution of HeLa cell lysate from 5 μ g to 0.078 μ g

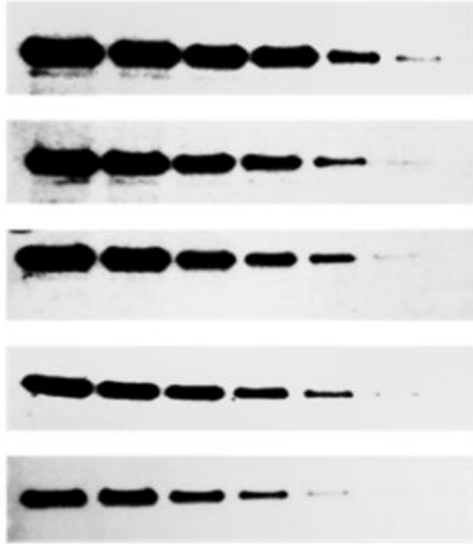
Primary antibody: Rabbit-anti Human HDAC-1 1:2000.

Secondary antibody: Goat anti-rabbit IgG HRP 1:20000.

Imager: ImageQuant LAS 4000 (GE Healthcare). Exposure time: 180 seconds

NeoPRO Pico PLUS Western ECL Substrate

Versatile substrate for mid-femtogram detection level. Less optimization required. High sensitivity combined with a broad linear dynamic range for an accurate quantification of both low and high abundance proteins in the same experiment. Extremely long signal duration.



NeoPRO Pico PLUS Western ECL Substrate

SuperSignal West Dura-Thermo Scientific

Amersham ECL Prime -Cytiva

SuperSignal West PICO PLUS- Thermo Scientific

Clarity - BioRad

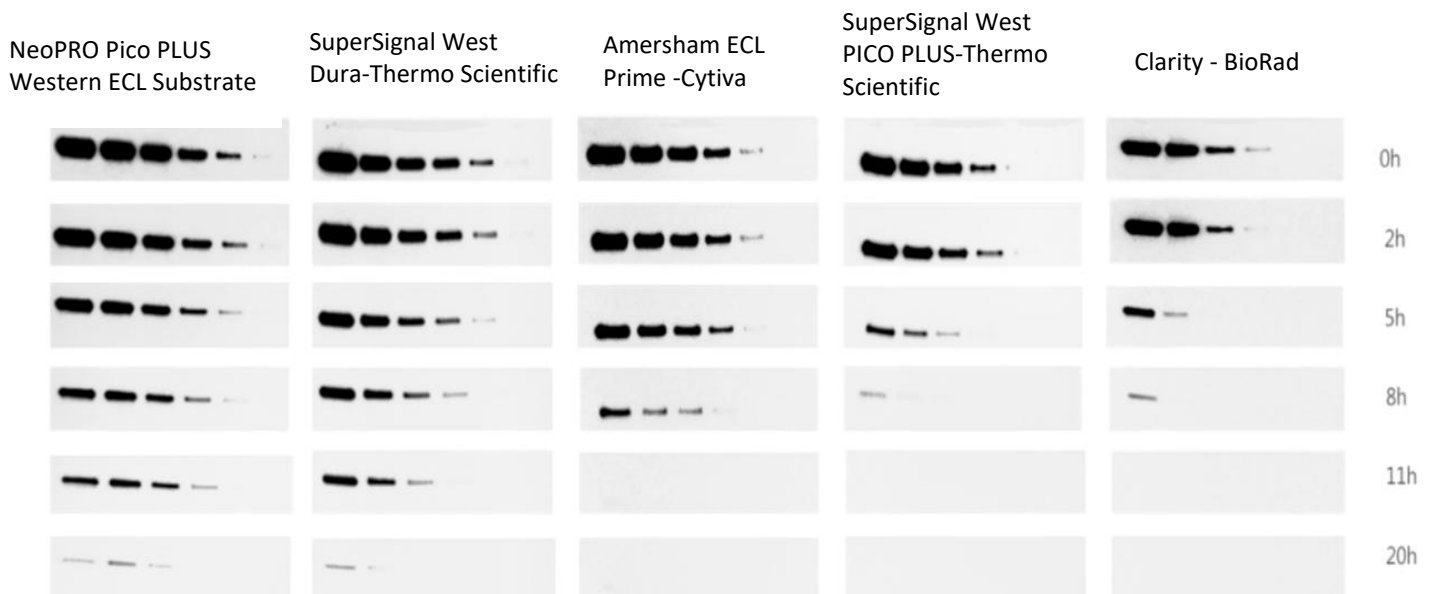
Western blotting detection of HDAC-1 on Hela cell lysate with NeoPRO Pico PLUS Western ECL Substrate and its competitors.

Sample: Two-fold dilution of Hela cell lysate from 5 µg to 0.078 µg

Primary antibody: Rabbit-anti Human HDAC-1 1:5000.

Secondary antibody: Goat anti-rabbit IgG HRP 1:75000.

Imager: ImageQuant LAS 4000 (GE Healthcare). Exposure time: 180 seconds



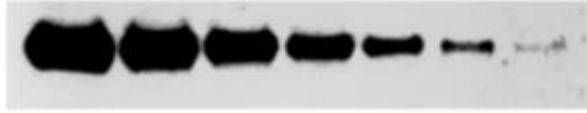
Extended signal duration of NeoPRO Pico PLUS Western ECL Substrate

For either NeoPRO Pico PLUS Western ECL Substrate or its competitors, exposure time is 180 seconds for each time points (0-2-5-8-11-20 hours)

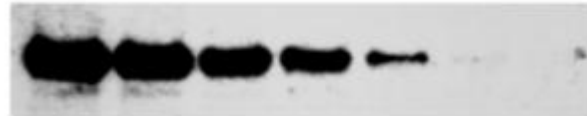
NeoPRO Femto Western ECL Substrate

Perfect choice for applications requiring very high sensitivity and an extended signal duration.

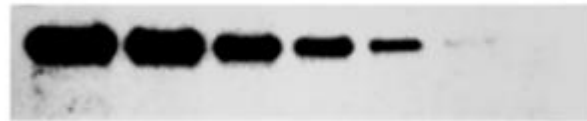
Strong signal in the presence of a very low background level, resulting in a high signal-to-noise ratio for mid to low femtogram detection level.



NeoPRO Femto Western ECL Substrate



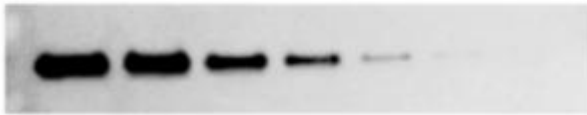
SuperSignal West Dura-Thermo Scientific



Amersham ECL Prime -Cytiva



SuperSignal West PICO PLUS- Thermo Scientific



Clarity - BioRad



Immobilon Forte-Millipore

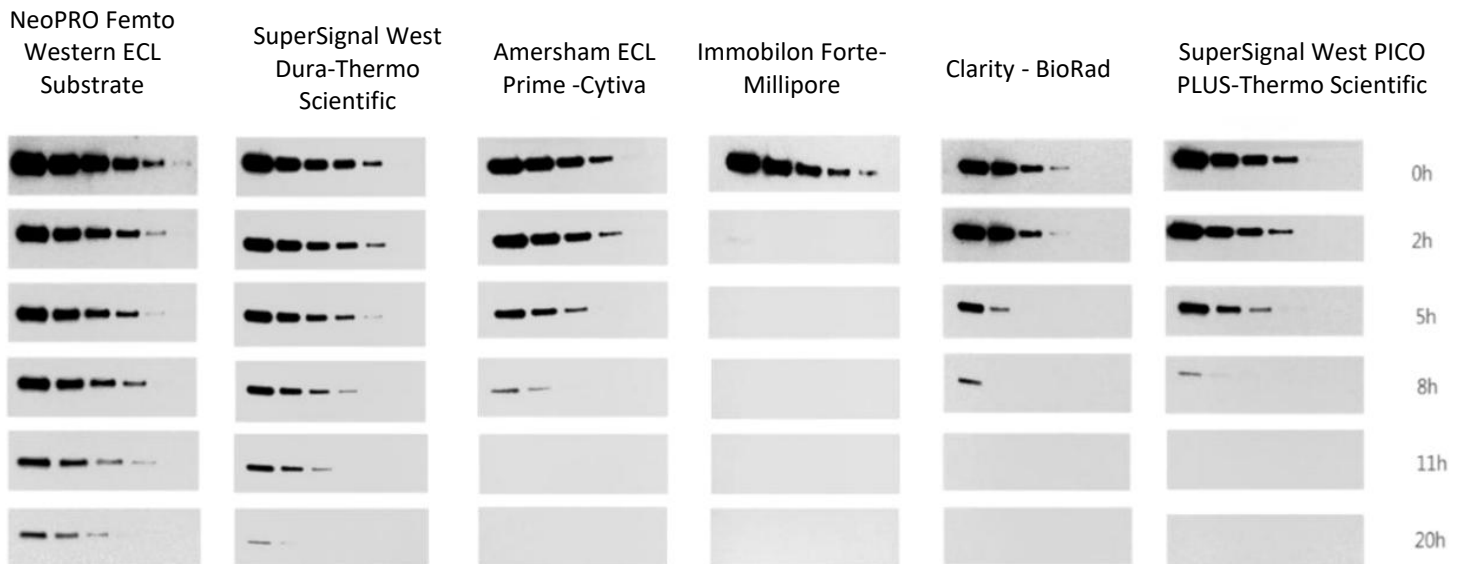
Western blotting detection of HDAC-1 on Hela cell lysate with NeoPRO Femto Western ECL Substrate and its competitors.

Sample: Two-fold dilution of Hela cell lysate from 5 µg to 0.078 µg

Primary antibody: Rabbit-anti Human HDAC-1 1:7500.

Secondary antibody: Goat anti-rabbit IgG HRP 1:100000.

Imager: ImageQuant LAS 4000 (GE Healthcare). Exposure time: 180 seconds.



Extended signal duration with NeoPRO Femto Western ECL Substrate

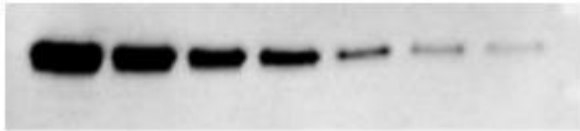
For either NeoPRO Femto Western ECL Substrate or its competitors, exposure time is 180 seconds for each time points (0-2-5-8-11-20 hours)

NeoPRO Femto PLUS Western ECL Substrate

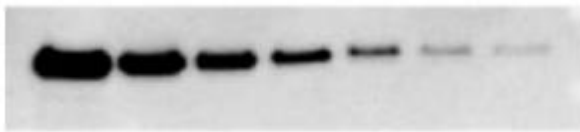
Ultra-sensitive substrate with low-femtogram detection level.

Excellent signal intensity and sensitivity to detect very low amounts of proteins using less antibodies.

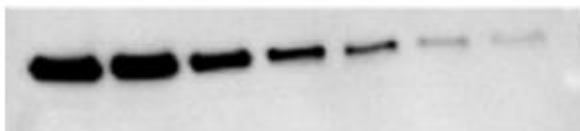
Wide linear dynamic range and ultra-high sensitivity for quantitative analysis.



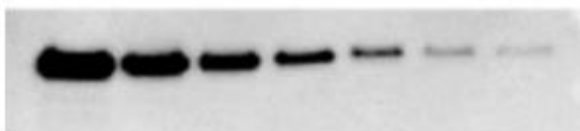
NeoPRO Femto PLUS Western ECL Substrate



Clarity Max – Bio-Rad



Amersham ECL Select – Cytiva



Supersignal West Femto-Thermo Scientific

Western blotting detection of HDAC-1 on Hela cell lysate with NeoPRO Femto PLUS Western ECL Substrate and its competitors.

Sample: Two-fold dilution of Hela cell lysate from 2.5 µg to 0.039 µg

Primary antibody: Rabbit-anti Human HDAC-1 1:10000.

Secondary antibody: Goat anti-rabbit IgG HRP 1:300000.

Imager: ImageQuant™ LAS 4000 (GE Healthcare). Exposure time: 120 seconds.

NeoPRO Atto Western ECL Substrate

Substrate developed with exclusive patented technology for attogram detection.

Extreme signal intensity and sensitivity to enhance the accuracy of Western blotting for a clearer interpretation of the faintest bands.

Best choice to detect minute amounts of proteins, using extremely diluted antibodies or loading limited amounts of cell lysates, thus saving precious samples and expensive primary antibodies.

Extremely high light emission for very bright bands in few seconds of exposure.

A)



NeoPRO Atto Western ECL Substrate



NeoPRO Femto PLUS Western ECL Substrate



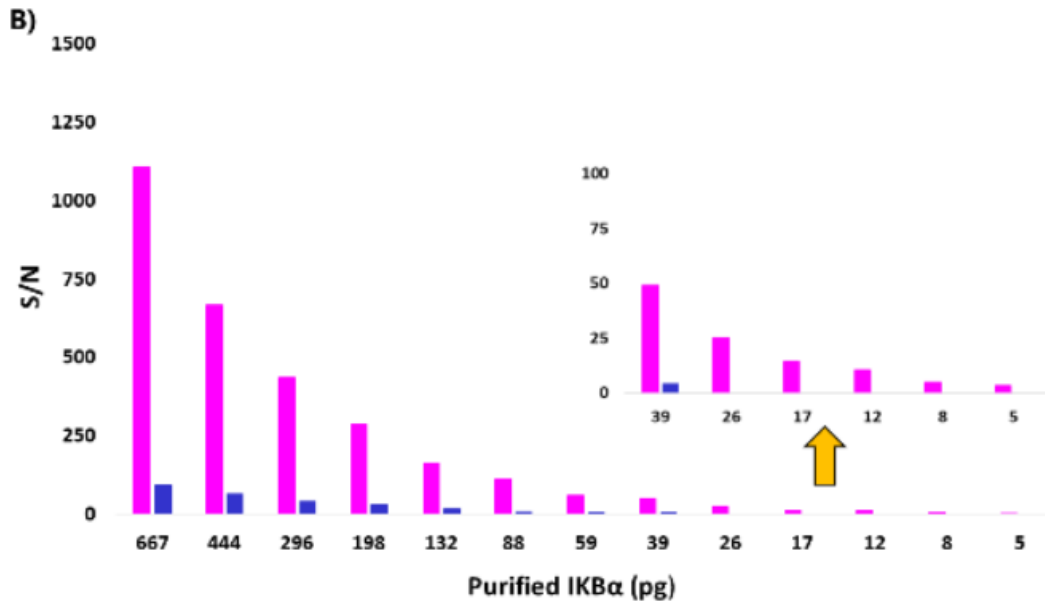
Clarity Max - BioRad



Amersham ECL Select – Cytiva



SuperSignal Femto -Thermo Scientific



■ Neopro Atto Western

■ SuperSignal West Femto -Thermo Scientific

Superior sensitivity of Neopro Atto Western ECL Substrate

A) Purified IKB α 1,5 -fold dilutions from 1000 to 5,1 pg Ab 1° Rabbit anti IKB α 1:1000 Ab 2° Goat anti rabbit 1:500000 Exposure time: 10 seconds with ImageQuant™ LAS 4000 (GE Healthcare).

B) Signal-to-noise ratio (S/N) analysis. The inset enlargement shows the enhanced sensitivity of Neopro Atto Western ECL Substrate.