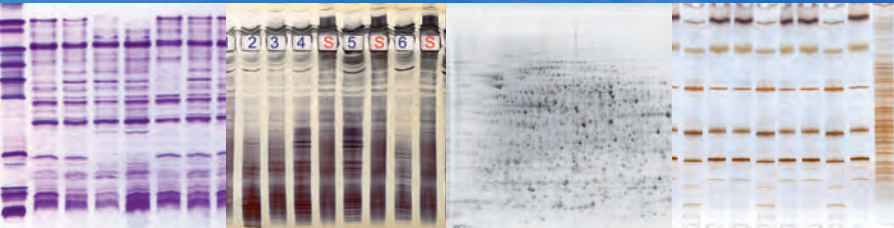


# SERVA

■ serving scientists ■



## HPE™ BlueHorizon™



The Better Flatbed Electrophoresis System

Best in Horizontal Electrophoresis

IEF, SDS PAGE, 2D

Broad Range of Precast Gels Available

HCP Analysis by 2D WB

IQ/OQ/PQ & Workshops on Request

Replaces MultiPhor II™ – Compatible Format

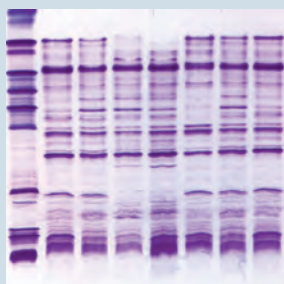
Distributed by:

**CliniSciences Group**



# Applications in IEF

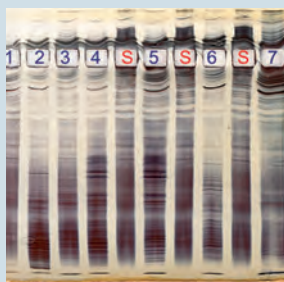
## Isoelectric Focusing



Horizontal isoelectric focusing requires high voltage. For best separation, a system with high cooling efficiency is a must as provided by the HPE™ BlueHorizon™ resulting in unmatched resolution. Protocols for many applications available, such as agriculture (e.g. maize, wheat, sorghum, carrot, potato), veterinary (e.g. pork, cattle, turkey, chicken), food (e.g. meat, cheese, pasta) and health (e.g. MS, EPO, antibodies).

Description	Size	Cat. no.
SERVALYT™ PRECOTES™ pH 3 – 10, size 245 mm x 125 mm x 0.3 mm	5 gels	42867.02
FocusGel 3 – 10 24S, size 250 mm x 115 mm x 0.65 mm	5 gels	43335.01
SERVA IEF Gel 3 - 9 for PhastSystem™, size 50 mm x 42 mm x 0.43 mm	10 gels	43366.01

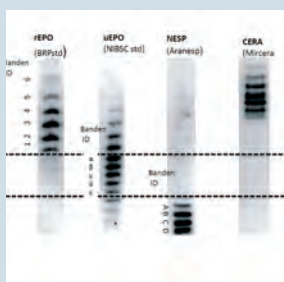
## CSF Separation



The identification of oligoclonal bands in cerebrospinal fluid (CSF) continues to be the most sensitive diagnostic test for Multiple Sclerosis (MS). With the HPE™ BlueHorizon™ and the precast IEF gels for CSF SERVA offers a reliable system delivering highest resolution and reproducibility.

Description	Size	Cat. no.
SERVALYT™ PRECOTES™ CSF Kit, 245 mm x 125 mm x 0.3 mm	1 kit	42800.01
FocusGel 6 – 11 40S, size 250 mm x 115 mm x 0.65 mm	5 gels	43333.01
CSF Analysis Kit for Phast™ System, 50 mm x 42 mm x 0.43 mm	1 kit	43393.01

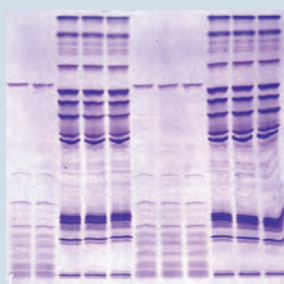
## EPO Differentiation



For characterization of natural and recombinant erythropoietin (EPO) in QC (pharma) or doping control (NADA/WADA) the EPO Doping Kit allows horizontal, IEF based sample separation. After electrophoresis the separated protein bands can be blotted onto a membrane, e.g. by pressure blotting. Secure verification of EPO isoforms is then done by immuno detection.

Description	Size	Cat. no.
EPO Doping IEF Kit 30S	1 kit	43389.01

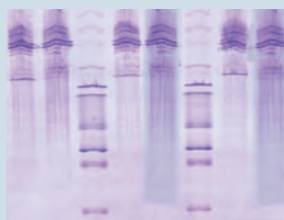
## Blank PRECOTES™ and Blank FocusGels



Blank PRECOTES™ and Blank FocusGels can be equilibrated with every carrier ampholyte for highest flexibility. It allows i.a. the usage of very basic ampholytes and equilibration of the acrylamide gel matrix with urea for denaturing IEF applications.

Description	Size	Cat. no.
Blank PRECOTES™ 125 mm x 125 mm x 0.3 mm	5 gels	42759.01
Blank FocusGel 24S, 250 mm x 115 mm x 0.65 mm	4 gels	43413.01

## Antibody Separation



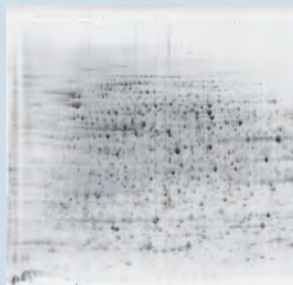
Use SERVA precast gels and the HPE™ BlueHorizon™ to screen the quality of recombinant antibodies. This reproducible and reliable system can further be qualified by IQ/OQ/PQ on request.

Distributed by:

**CliniSciences Group**

# Applications in SDS PAGE

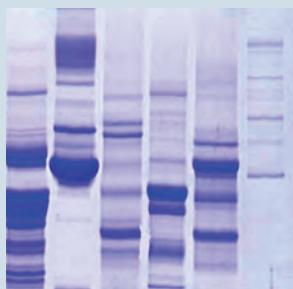
## 2D Electrophoresis



Horizontal 2D electrophoresis combines many advantages like higher resolution with up to 25 % more spots or much lower buffer consumption compared to traditional vertical systems. Easy handling is guaranteed due to the film-backed stabilization of the gels, available in 3 different formats.

Description	Size	Cat. no.
2D HPE™ Large Gel NF 12.5 % Kit, 255 mm x 200 mm x 0.65 mm	1 kit	43304.01
2D HPE™ Double Gel NF 12.5 % Kit, 250 mm x 110 mm x 0.65 mm	1 kit	43302.01
2D HPE™ Triple Gel NF 12.5 % Kit, 250 mm x 110 mm x 0.65 mm	1 kit	43300.01

## SDS PAGE



SDS PAGE carried out in horizontal orientation is a valuable option to replace common vertical SDS PAGE. SERVA delivers precast small and large format gels up to 255 mm x 200 mm. Efficient temperature control leads to superb resolution. Low buffer consumption, precast slots and easy handling of the film-backed precast gels are other benefits of the horizontal method.

Description	Size	Cat. no.
SDS Gel Kit 10 % 25S, 250 mm x 125 mm x 0.45 mm	1 kit	43359.01
SDS Gel Kit NF 12.5 % 25S, 250 mm x 125 mm x 0.45 mm	1 kit	43363.01
SERVA SDS Gel 8 - 25 % for PhastSystem™, size 50 mm x 42 mm x 0.43 mm	1 kit	43503.01

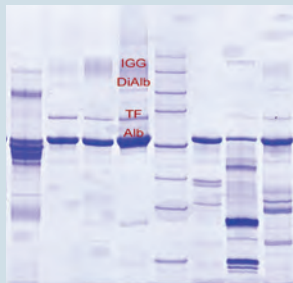
## SDS TA PAGE



While most precast gels for SDS PAGE contain a neutral buffer system, the Excellent gels come with a tris/acetate buffer system showing comparable band patterns like the Excel™ gels from GE Healthcare. For separation of tissue extracts, caseins and more.

Description	Size	Cat. no.
Excellent Gel Kit 7,5 %, 250 mm x 125 mm x 0.43 mm	1 kit	43422.01
Excellent Gel Kit NF 7,5 %, 250 mm x 125 mm x 0.43 mm	1 kit	43424.01
Excellent Gel Kit 12,5 %, 250 mm x 125 mm x 0.43 mm	1 kit	43421.01
Excellent Gel Kit NF 12,5 %, 250 mm x 125 mm x 0.43 mm	1 kit	43423.01
Excellent Gel Kit 15 %, 250 mm x 125 mm x 0.43 mm	1 kit	43425.01
Excellent Gel Kit NF 15%, 250 mm x 125 mm x 0.43 mm	1 kit	43426.01

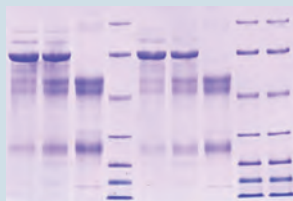
## Urinary Protein Analysis



The SDS Urine Gel is optimized for urine protein separation and delivers reliable and reproducible results in horizontal gel electrophoresis. This kit allows simultaneous analysis of up to 25 samples including marker lanes, the maximum loading volume is 15 µl.

Description	Size	Cat. no.
SDS Urine Gel Kit 25S, 250 mm x 125 mm x 0.45 mm	1 kit	43391.01

## Antibody Separation



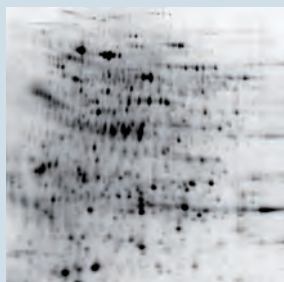
Apply SDS PAGE to analyse your recombinant antibodies. SERVA precast gels and HPE™ BlueHorizon™ can be qualified by IQ/OQ/PQ on request.

Distributed by:

**CliniSciences Group**

# Other Applications

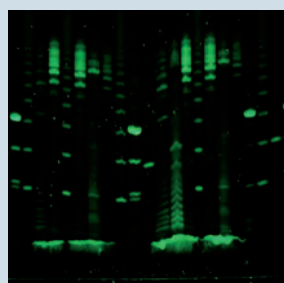
## HCP Analysis by 2D Western Blotting



The development of SERVA HPE™ 2D Gels for Western Blotting is a powerful tool to perform state-of-the-art HCP analysis by gel-based electrophoretic separation of samples. After 1D and 2D electrophoresis, the samples are transferred to a membrane and then detected with HCP-specific antibodies.

Description	Size	Cat. no.
2D HPE™ Triple BlotGel NF 12,5 %	1 kit	43429.01
2D HPE™ Double BlotGel NF 12,5 %	1 kit	43430.01
2D HPE™ Large BlotGel NF 12,5 %	1 kit	43432.01

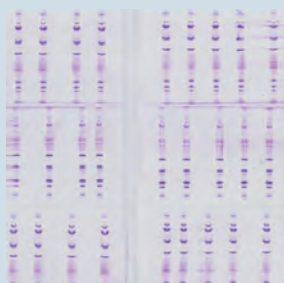
## Analysis of glycans by HPE™ Electrophoresis



The high-end separation of glycans by HPE™ flatbed electrophoresis was made possible by two parallel, interlocking innovations: (1) The development of a new chemical one pot method to release glycans from proteins including fluorescent labelling of released glycans by ANTS and (2) the development of the HPE™ GlycoGel horizontal, film backed precast gels. The large format HPE™ GlycoGels (250 mm x 125 mm x 0,43 mm) allow a resolution of up to 13 GUs. After electrophoresis the ANTS labelled, clearly defined glycan bands can be visualized and captured by an imaging system by applying a UV 365 transilluminator in combination with a 525 nm filter.

For more information please contact SERVA at [tech.service@serva.de](mailto:tech.service@serva.de).

## Bi-Directional Electrophoresis & 4-Electrode Lid



By using an electrode lid with three electrodes, i.e. the anode in the middle and both cathodes on the outside, the number of samples to be analysed can be doubled. This modified lid can be used whenever short runs are applicable for a reliable analysis.

A 4-electrode lid is available on request, please contact SERVA at [tech.service@serva.de](mailto:tech.service@serva.de).

Description	Size	Cat. no.
3-Electrode Lid for Bi-Directional Electrophoresis	1 piece	HPE-3EL

## IPG Tray with Electrode Lid



Turn your HPE™ BlueHorizon™ into a 1<sup>st</sup> dimension IEF device for 2D electrophoresis! The HPE™ IPG tray holds up to 12 IPG strips ranging from 7 cm up to 24 cm, each. The flexible design allows the electrode spacing to be adapted to the IPG strips used. This makes the system flexible and versatile. The high current required for IPG strip focusing is supplied by the robust 6000 V high-voltage power supply.

Description	Size	Cat. no.
HPE™ electrode lid with IPG tray	1 kit	HPE-ELIPG
BluePower™ 6000 IPG Power Supply	1 piece	BP-6000-IPG

## Customer Key



Veterinary / Food



Agriculture



Pharma



Health / Diagnostics



Academic

**Distributed by:**

**CliniSciences Group**



# HPE™ BlueHorizon™ – optimized performance in flatbed gel electrophoresis

The HPE™ BlueHorizon™ is a flatbed system for horizontal electrophoresis using precast gels, self-cast gels and gel strips. Main applications are isoelectric focusing (IEF - like CSF, seed and food analysis, EPO, separation of antibodies and other recombinant proteins), SDS and native PAGE, 2D electrophoresis as well as separation of nucleic acids. The HPE™ BlueHorizon™ flatbed electrophoresis system provides unmatched resolution, reproducibility and sensitivity – the first true „High Performance Electrophoresis (HPE)“ system



Safety lid with unbreakable, robust platinum electrodes, flexible positioning



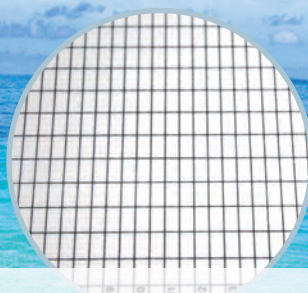
Low buffer consumption, gels are easy to load



Stackable: Up to 4 units for simultaneous operation



Drawer with safety lock, convenient to handle



Ceramic cooling plate, easy alignment of gels

- Compatible with all types of flatbed electrophoretic applications
- Highest resolution achieved using premium quality ceramic cooling plate
- Thin polyacrylamide gels, format up to 260 mm x 205 mm
- Broad range of precast gels for versatile applications available
- Complete range of reagents and consumables for self-casting of flatbed gels available
- IQ/OQ/PQ qualification on request
- Technical support and workshops
- Replacement of MultiPhor II™\*: compatible format

\*MultiPhor II™ = reg. trademark of GE Healthcare

Distributed by:

**CliniSciences Group**



## HPE™ BlueHorizon™ – a modular system that grows with your needs

The HPE™ BlueHorizon™ is a very flexible system that could easily be extended to a two-, three- or four-deck system, still under the control of one power supply and one chiller. Stable set-up is guaranteed by stabilizing feet and clamps connecting the single units. For bi-directional electrophoresis a unit equipped with a three-electrode lid is available.



### Specifications

Voltage (max.)	3000 V
Current (max.)	25 mA
Maximum gel size	260 x 205 mm
Electrode distances at	270 mm, 195 mm and 115 mm
Temperature operating range	4 °C to 30 °C
Dimensions (WxHxD)	450 x 120 x 500 mm
Weight	6 kg

### Ordering information

Product	Size	Cat. no.
HPE™ BlueHorizon™	1 unit	HPE-BH
BluePower™ HPE™ 3000 Power Supply	1 unit	BP-3000-HPE
HPE™ Cooling Unit (Chiller)	1 unit	HPE-CU1
HPE™ BlueHorizon™ PS (HPE™ BlueHorizon™ + BluePower™ HPE™ 3000 Power Supply)	1 system	HPE-BHP
HPE™ BlueHorizon™ C (HPE™ BlueHorizon™ + HPE™ Cooling Unit)	1 system	HPE-BHC
HPE™ BlueHorizon™ System (HPE™ BlueHorizon™ + BluePower™ HPE™ 3000 Power Supply + HPE™ Cooling Unit)	1 system	HPE-BHSYS
HPE™ BlueHorizon™ Double Deck	1 unit	HPE-BHD
HPE™ BlueHorizon™ Triple Deck	1 unit	HPE-BHT
HPE™ BlueHorizon™ Quadra Deck	1 unit	HPE-BHQ
Stabilizing Feet, for HPE-BH	1 pair of 2	HPE-SF
Stabilizing Clamps, for HPE-BH	1 pair of 2	HPE-SC
HPE™BlueHorizon™ Bidirectional	1 unit	HPE-BH3E
3-Electrode Lid for Bi-Directional Electrophoresis	1 unit	HPE-3EL

Distributed by:

**CliniSciences Group**

**SERVA**  
■ serving scientists ■

# CliniSciences Group

## Austria



Company: CliniSciences GmbH  
Address: Sternwartestrasse 76, A-1180  
Wien - Austria  
Telephone: +43 720 115 580  
Fax: +43 720 115 577  
Email: [oesterreich@clinisciences.com](mailto:oesterreich@clinisciences.com)  
Web: <https://www.clinisciences.com>

## Belgium



Company: CliniSciences S.R.L.  
Address: Avenue Stalingrad 52, 1000  
Brussels - Belgium  
Telephone: +32 2 31 50 800  
Fax: +32 2 31 50 801  
Email: [belgium@clinisciences.com](mailto:belgium@clinisciences.com)  
Web: <https://www.clinisciences.com>

## Denmark



Company: CliniSciences ApS  
Address: Oesterbrogade 226, st. 1,  
Copenhagen, 2100 - Denmark  
Telephone: +45 89 888 349  
Fax: +45 89 884 064  
Email: [danmark@clinisciences.com](mailto:danmark@clinisciences.com)  
Web: <https://www.clinisciences.com>

## Finland



Company: CliniSciences ApS  
Address: Oesterbrogade 226, st. 1,  
Copenhagen, 2100 - Denmark  
Telephone: +45 89 888 349  
Fax: +45 89 884 064  
Email: [suomi@clinisciences.com](mailto:suomi@clinisciences.com)  
Web: <https://www.clinisciences.com>

## France



Company: CliniSciences S.A.S  
Address: 74 Rue des Suisses, 92000  
Nanterre- France  
Telephone: +33 9 77 40 09 09  
Fax: +33 9 77 40 10 11  
Email: [info@clinisciences.com](mailto:info@clinisciences.com)  
Web: <https://www.clinisciences.com>

## Germany



Company: Biotrend Chemikalien GmbH  
Address: Wilhelm-Mauser-Str. 41-43,  
50827 Köln - Germany  
Telephone: +49 221 9498 320  
Fax: +49 221 9498 325  
Email: [info@biotrend.com](mailto:info@biotrend.com)  
Web: <https://www.biotrend.com>

## Iceland



Company: CliniSciences ApS  
Address: Oesterbrogade 226, st. 1,  
Copenhagen, 2100 - Denmark  
Telephone: +45 89 888 349  
Fax: +45 89 884 064  
Email: [island@clinisciences.com](mailto:island@clinisciences.com)  
Web: <https://www.clinisciences.com>

## Ireland



Company: CliniSciences Limited  
Address: Ground Floor, 71 lower Baggot street  
Dublin D02 P593 - Ireland  
Telephone: +353 1 6971 146  
Fax: +353 1 6971 147  
Email: [ireland@clinisciences.com](mailto:ireland@clinisciences.com)  
Web: <https://www.clinisciences.com>

## Italy



Company: CliniSciences S.r.l  
Address: Via Maremmana inferiore 378  
Roma 00012 Guidonia Montecelio - Italy  
Telephone: +39 06 94 80 56 71  
Fax: +39 06 94 80 00 21  
Email: [italia@clinisciences.com](mailto:italia@clinisciences.com)  
Web: <https://www.clinisciences.com>

## Netherlands



Company: CliniSciences B.V.  
Address: Kraijenhoffstraat 137A,  
1018RG Amsterdam, - Netherlands  
Telephone: +31 85 2082 351  
Fax: +31 85 2082 353  
Email: [nederland@clinisciences.com](mailto:nederland@clinisciences.com)  
Web: <https://www.clinisciences.com>

## Norway



Company: CliniSciences AS  
Address: c/o MerVerdi Munkerudtunet 10  
1164 Oslo - Norway  
Telephone: +47 21 988 882  
Email: [norge@clinisciences.com](mailto:norge@clinisciences.com)  
Web: <https://www.clinisciences.com>

## Poland



Company: CliniSciences sp.Z.o.o.  
Address: ul. Rotmistrza Witolda Pileckiego 67  
lok. 200 - 02-781 Warszawa -Poland  
Telephone: +48 22 307 0535  
Fax: +48 22 307 0532  
Email: [polaska@clinisciences.com](mailto:polaska@clinisciences.com)  
Web: <https://www.clinisciences.com>

## Portugal



Company: Quimigen Unipessoal LDA  
Address: Rua Almada Negreiros, Lote 5, Loja 14,  
2615-275 Alverca Do Ribatejo - Portugal  
Telephone: +351 30 8808 050  
Fax: +351 30 8808 052  
Email: [info@quimigen.com](mailto:info@quimigen.com)  
Web: <https://www.quimigen.pt>

## Spain



Company: CliniSciences Lab Solutions  
Address: C/ Hermanos del Moral 13  
(Bajo E), 28019, Madrid - Spain  
Telephone: +34 916 750 700  
Fax: +34 91 269 40 74  
Email: [espana@clinisciences.com](mailto:espana@clinisciences.com)  
Web: <https://www.clinisciences.com>

## Sweden



Company: CliniSciences ApS  
Address: Oesterbrogade 226, st. 1,  
Copenhagen, 2100 - Denmark  
Telephone: +45 89 888 349  
Fax: +45 89 884 064  
Email: [sverige@clinisciences.com](mailto:sverige@clinisciences.com)  
Web: <https://www.clinisciences.com>

## Switzerland



Company: CliniSciences AG  
Address: Fracht Ost Flughafen Kloten  
CH-8058 Zürich - Switzerland  
Telephone: +41 (044) 805 76 81  
Fax: +41 (044) 805 76 75  
Email: [switzerland@clinisciences.com](mailto:switzerland@clinisciences.com)  
Web: <https://www.clinisciences.com>

## UK



Company: CliniSciences Limited  
Address: 11 Progress Business center, Whittle  
Parkway, SL1 6DQ Slough- United Kingdom  
Telephone: +44 (0)1753 866 511  
or +44 (0) 330 684 0982  
Fax: +44 (0)1753 208 899  
Email: [uk@clinisciences.com](mailto:uk@clinisciences.com)  
Web: <https://www.clinisciences.com>

## USA



Company: Biotrend Chemicals LLC  
Address: c/o Carr Riggs Ingram,  
500 Grand Boulevard, Suite 210 Miramar  
Beach, FL 32550- USA  
Telephone: +1 850 650 7790  
Fax: +1 850 650 4383  
Email: [info@biotrend-usa.com](mailto:info@biotrend-usa.com)  
Web: <https://www.biotrend-usa.com>