

## Immunofluorescence Has Never Been This Easy

### ✓ Fast and Simple Handling

Simplify your staining procedure—perform all steps in one single slide

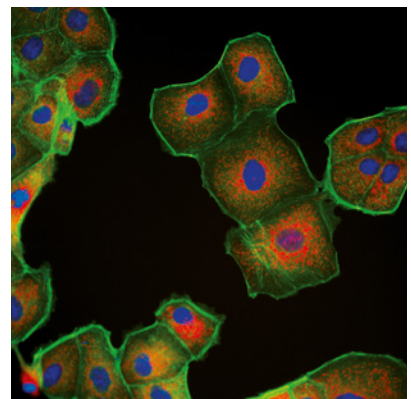
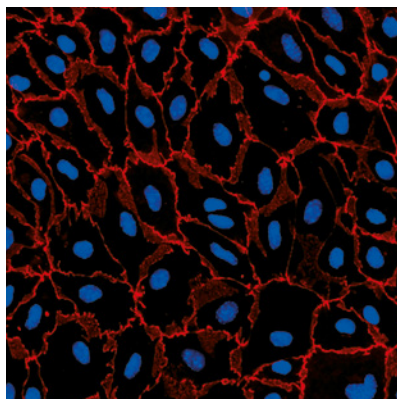
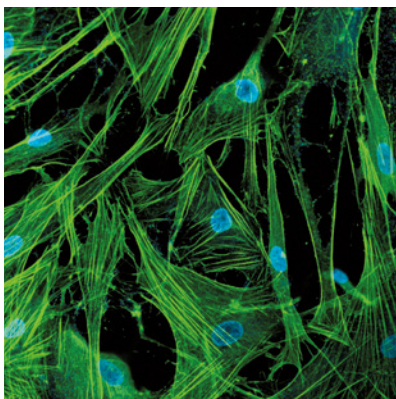
### ✓ Cost-Effective Experiments

Reduce your costs—use only small numbers of cells and a low amount of medium and antibodies

### ✓ High-Resolution Imaging

Get brilliant microscopic images due to the slides' optical specifications

Image info on the back side.



**Distributed by:**

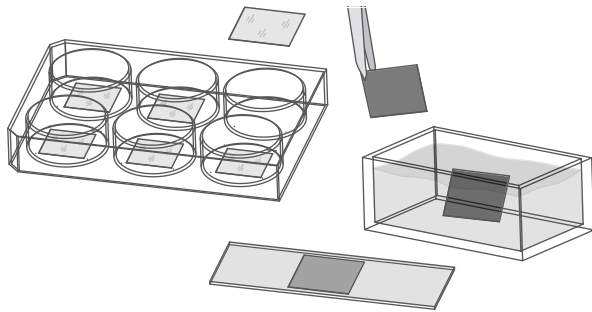
**CliniSciences Group**

# Saving Time With Immunofluorescence Assays

## Comparison of Immunocytochemistry Protocols: Traditional Staining vs. Staining With ibidi Solutions

### Protocol With Cells on Coverslips

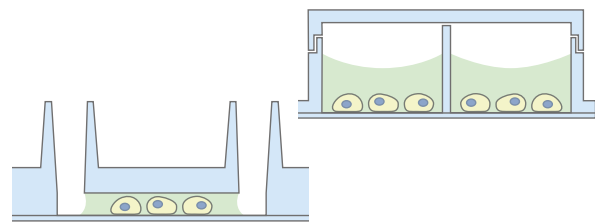
Traditional method with nail polish mounting



- Sterilize coverslips and slides
- Coat coverslips
- Place sterile coverslips into 6-well plate
- Seed cells in large volume
- Peel off the coverslip
- Wash
- Fix – wash – permeabilize – wash – block
- Incubate in primary antibody – wash – incubate in secondary antibody
- Wash
- Mount cells with mounting medium
- Mount coverslip with nail polish

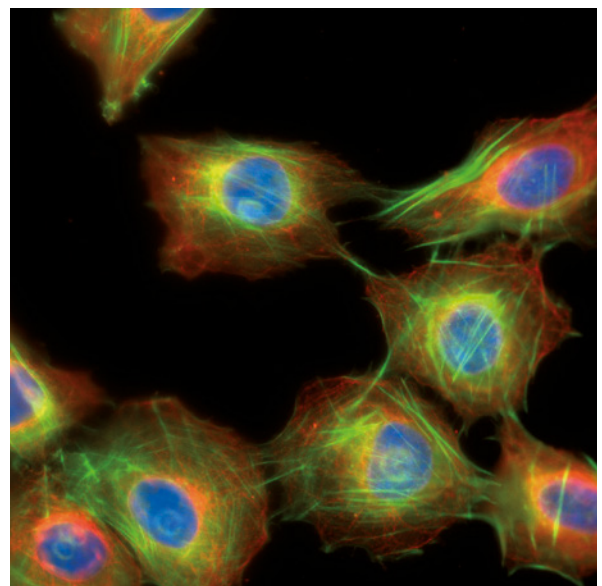
### Protocol With ibidi $\mu$ -Slides

Time-saving method using all-in-one chambers



- Sterilize coverslips and slides
- Coat coverslips
- Place sterile coverslips into 6-well plate
- Seed cells in large volume
- Peel off the coverslip
- Wash
- Fix – wash – permeabilize – wash – block
- Incubate in primary antibody – wash – incubate in secondary antibody
- Wash
- Mount cells with mounting medium
- Mount coverslip with nail polish

Fluorescence microscopy of rat fibroblasts (Rat1) in a  $\mu$ -Slide 18 Well Glass Bottom. Red: alpha-tubulin; green: F-actin, stained with LifeAct-TagGFP2 Protein; blue: nuclei (ibidi Mounting Medium with DAPI). 60x objective lens, oil immersion.



**Distributed by:**

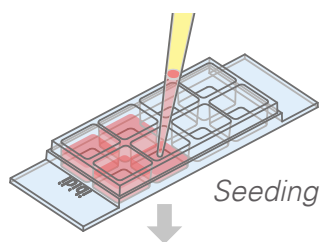
**CliniSciences Group**

## Tailored for Your Assay: Choose from 3 Unique Solutions

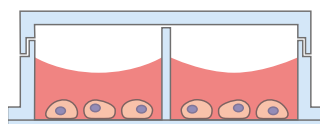


### Chambered Coverslips

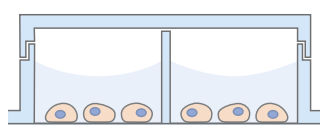
- Up to 18 non-removable wells on a coverslip bottom
- Versatile use for different cell culture applications
- Different coatings available



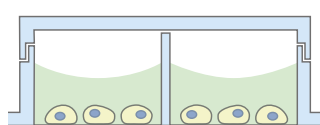
Seeding



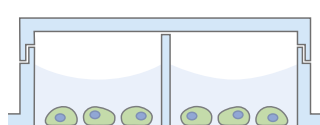
Cultivation



Fixation



Staining

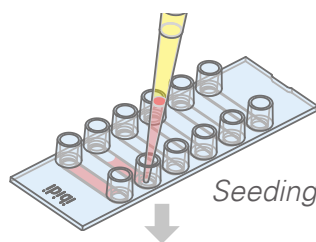


Imaging

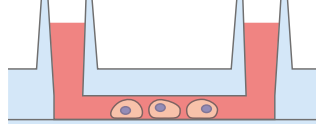


### Channel Slides

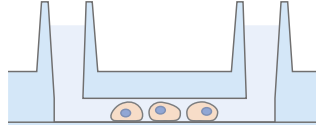
- Six parallel channels on a coverslip bottom
- Homogeneous cell and antibody distribution and small medium amounts
- Different channel heights and coatings available



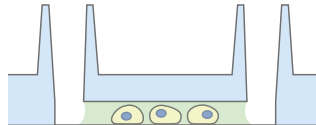
Seeding



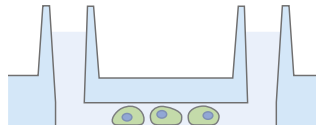
Cultivation



Fixation



Staining

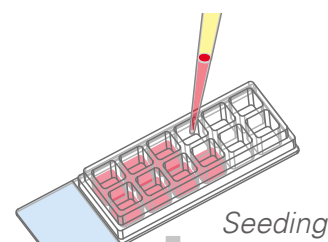


Imaging

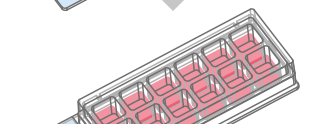


### Chamber Slides

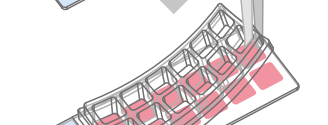
- Removable silicone chambers on a standard glass slide
- Ideal for long-term storage
- Suitable for high-throughput screening



Seeding



Cultivation



Chamber removal



Fixation & Staining

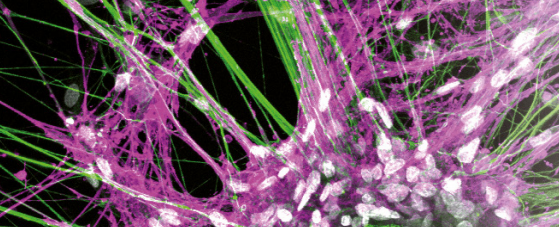


Mounting & Imaging

**Distributed by:**

**CliniSciences Group**





# Immunofluorescence Has Never Been This Easy

ibidi provides several solutions that fit your needs for immunofluorescence assays:



**Chambered Coverslips**



**Channel Slides**



**Chamber Slides, removable**

Find many more varieties on the ibidi website.

**μ-Slide 2 | 4 | 8 | 18 Well**

**μ-Slide VI<sup>0.4</sup> | μ-Slide I Luer**

**3 | 8 | 12 Well Chamber**

Bottom material	Glass Coverslip or Polymer Coverslip	Glass Coverslip or Polymer Coverslip	Standard glass slide
Microscope type	Inverted	Inverted	Inverted & upright
Mounting medium	Non-hardening	Non-hardening	Hardening
Sample storage	Short-term	Short-term	Long-term



## Support Your IF Assay With the Ready-to-Use ibidi Mounting Medium

- Available with and without DAPI
- Non-hardening—facilitates the mounting of samples in channel slides
- Very low autofluorescence and prevention of photobleaching
- Allows sample storage for weeks without additional coverslips

### Front Page Image Information:

**Top:** Laser scanning microscopy of RDRGN and Schwann cells in a μ-Slide 8 Well, stained for neurofilament (green), NGFR (magenta), and DAPI (white). T. Weiss, Division of Plastic and Reconstructive Surgery, Medical University of Vienna, Austria.

**Left:** Trabecular meshwork cells of the human eye in the ibidi 8 Well Chamber, removable, stained for F-actin filaments (green) and DAPI (blue). Samantha Shan, School of Optometry, The Hong Kong Polytechnic University.

**Middle:** Epi-fluorescence of pMBMECs in the 12 Well Chamber, removable, stained for endothelial cell junctions (ZO-1, red) and DAPI (blue). S. Aydin, B. Engelhardt, R. Lyck, Theodor Kocher Institute, Bern, Switzerland.

**Right:** Widefield fluorescence of MDCK cells in the μ-Slide VI<sup>0.4</sup>, stained for F-actin (green), mitochondria (red), and DAPI (blue). Data by ibidi R&D.

**Distributed by:**

**CliniSciences Group**

# CliniSciences Group

## Austria

Company: CliniSciences GmbH  
Address: Sternwartestrasse 76, A-1180  
Wien - Austria  
Telephone: +43 720 115 580  
Fax: +43 720 115 577  
Email: [oesterreich@clinisciences.com](mailto:oesterreich@clinisciences.com)  
Web: <https://www.clinisciences.com>



## Belgium

Company: CliniSciences S.R.L.  
Address: Avenue Stalingrad 52, 1000  
Brussels - Belgium  
Telephone: +32 2 31 50 800  
Fax: +32 2 31 50 801  
Email: [belgium@clinisciences.com](mailto:belgium@clinisciences.com)  
Web: <https://www.clinisciences.com>



## Denmark

Company: CliniSciences ApS  
Address: Oesterbrogade 226, st. 1,  
Copenhagen, 2100 - Denmark  
Telephone: +45 89 888 349  
Fax: +45 89 884 064  
Email: [danmark@clinisciences.com](mailto:danmark@clinisciences.com)  
Web: <https://www.clinisciences.com>



## Finland

Company: CliniSciences ApS  
Address: Oesterbrogade 226, st. 1,  
Copenhagen, 2100 - Denmark  
Telephone: +45 89 888 349  
Fax: +45 89 884 064  
Email: [suomi@clinisciences.com](mailto:suomi@clinisciences.com)  
Web: <https://www.clinisciences.com>



## France

Company: CliniSciences S.A.S  
Address: 74 Rue des Suisses, 92000  
Nanterre- France  
Telephone: +33 9 77 40 09 09  
Fax: +33 9 77 40 10 11  
Email: [info@clinisciences.com](mailto:info@clinisciences.com)  
Web: <https://www.clinisciences.com>



## Germany

Company: Biotrend Chemikalien GmbH  
Address: Wilhelm-Mauser-Str. 41-43,  
50827 Köln - Germany  
Telephone: +49 221 9498 320  
Fax: +49 221 9498 325  
Email: [info@biotrend.com](mailto:info@biotrend.com)  
Web: <https://www.biotrend.com>



## Iceland

Company: CliniSciences ApS  
Address: Oesterbrogade 226, st. 1,  
Copenhagen, 2100 - Denmark  
Telephone: +45 89 888 349  
Fax: +45 89 884 064  
Email: [island@clinisciences.com](mailto:island@clinisciences.com)  
Web: <https://www.clinisciences.com>



## Ireland

Company: CliniSciences Limited  
Address: Ground Floor, 71 lower Baggot street  
Dublin D02 P593 - Ireland  
Telephone: +353 1 6971 146  
Fax: +353 1 6971 147  
Email: [ireland@clinisciences.com](mailto:ireland@clinisciences.com)  
Web: <https://www.clinisciences.com>



## Italy

Company: CliniSciences S.r.l  
Address: Via Maremmana inferiore 378  
Roma 00012 Guidonia Montecelio - Italy  
Telephone: +39 06 94 80 56 71  
Fax: +39 06 94 80 00 21  
Email: [italia@clinisciences.com](mailto:italia@clinisciences.com)  
Web: <https://www.clinisciences.com>



## Netherlands

Company: CliniSciences B.V.  
Address: Gaetano Martinolaan 85, 6229  
GS Maastricht - Netherlands  
Telephone: +31 85 2082 351  
Fax: +31 85 2082 353  
Email: [nederland@clinisciences.com](mailto:nederland@clinisciences.com)  
Web: <https://www.clinisciences.com>



## Norway

Company: CliniSciences AS  
Address: c/o MerVerdi Munkerudtunet 10  
1164 Oslo - Norway  
Telephone: +47 21 988 882  
Email: [norge@clinisciences.com](mailto:norge@clinisciences.com)  
Web: <https://www.clinisciences.com>



## Poland

Company: CliniSciences sp.Z.o.o.  
Address: ul. Rotmistrza Witolda Pileckiego 67  
lok. 200 - 02-781 Warszawa -Poland  
Telephone: +48 22 307 0535  
Fax: +48 22 307 0532  
Email: [polska@clinisciences.com](mailto:polska@clinisciences.com)  
Web: <https://www.clinisciences.com>



## Portugal

Company: Quimigen Unipessoal LDA  
Address: Rua Almada Negreiros, Lote 5, Loja 14,  
2615-275 Alverca Do Ribatejo - Portugal  
Telephone: +351 30 8808 050  
Fax: +351 30 8808 052  
Email: [info@quimigen.com](mailto:info@quimigen.com)  
Web: <https://www.quimigen.pt>



## Spain

Company: CliniSciences Lab Solutions  
Address: C/ Hermanos del Moral 13  
(Bajo E), 28019, Madrid - Spain  
Telephone: +34 91 269 40 65  
Fax: +34 91 269 40 74  
Email: [espana@clinisciences.com](mailto:espana@clinisciences.com)  
Web: <https://www.clinisciences.com>



## Sweden

Company: CliniSciences ApS  
Address: Oesterbrogade 226, st. 1,  
Copenhagen, 2100 - Denmark  
Telephone: +45 89 888 349  
Fax: +45 89 884 064  
Email: [sverige@clinisciences.com](mailto:sverige@clinisciences.com)  
Web: <https://www.clinisciences.com>



## Switzerland

Company: CliniSciences AG  
Address: Fracht Ost Flughafen Kloten  
CH-8058 Zürich - Switzerland  
Telephone: +41 (044) 805 76 81  
Fax: +41 (044) 805 76 75  
Email: [switzerland@clinisciences.com](mailto:switzerland@clinisciences.com)  
Web: <https://www.clinisciences.com>



## UK

Company: CliniSciences Limited  
Address: 11 Progress Business center, Whittle  
Parkway, SL1 6DQ Slough- United Kingdom  
Telephone: +44 (0)1753 866 511  
or +44 (0) 330 684 0982  
Fax: +44 (0)1753 208 899  
Email: [uk@clinisciences.com](mailto:uk@clinisciences.com)  
IWeb: <https://www.clinisciences.com>



## USA

Company: Biotrend Chemicals LLC  
Address: c/o Carr Riggs Ingram,  
500 Grand Boulevard, Suite 210 Miramar  
Beach, FL 32550- USA  
Telephone: +1 850 650 7790  
Fax: +1 850 650 4383  
Email: [info@biotrend-usa.com](mailto:info@biotrend-usa.com)  
Web: <https://www.biotrend-usa.com>

